

# Village Halls Week 2020

20 January - 26 January 2020

**Celebrating England's  
Village Halls**



*Village Halls Week is run by the national rural charity  
Action with Communities in Rural England (ACRE)*

[www.acre.org.uk](http://www.acre.org.uk)

# *Did you know...*

After WW1, for over half a century, the community's hall was a hut purchased with funds from the United Service Fund



*A meeting was held in January 1921 in the village Reading Room, where it was decided the village needed a 'recreation room' (which became known as the Village Institute).*

# *Did you know...*

The current Village Hall was formerly the village school, which closed in July 1982 after being in existence for 111 years.



*Dwindling numbers meant that with only 10 pupils on roll (and just one teacher), the pupils had to move to Warslow Middle and First schools*



# Did you know...



The last  
few pupils...



The picture was taken a week before the school closed on 30 July 1982.  
The headteacher was Arnold Hibbert, who had been there for 13 yrs.

# *Did you know...*

The old school building was bought by the community in 1984



*The school building first reverted back to the owners, the Harpur Crewes, but it was bought by the village for the princely sum of £15,000 .*



# Did you know...

The new '**Memorial Hall & Community Centre**' officially opened in 1985



Grants were obtained and fund raising enabled extensive internal works to be completed, to make it suitable for a new village hall..

# Did you know...

6 years later, the old school garden was renovated as a recreational facility for all



The garden was initially rented by the Village Hall from the Education Trust opening in June 1991. ( In 2009, the Hall was able to buy the land, thanks to a donation from the family of the late Les Griffiin.)



# Did you know...

The old school garden is a peaceful space for Hall users, the local community, visitors...  
... and bugs



A bug hotel was erected in 2019 by children from the area  
(with the help of grown-ups from the Parent & Toddler Group)



# *Did you know...*

In 2006, the main hall floor was laid and levelled, and a pillar removed.



Costing around £100,000, the project was helped by grants from Staffordshire County Council, Robbie Williams, Garfield Weston Foundation and £20,000 of local donations.

# *Did you know...*

In 2011, fund-raising and grants enabled an extension to be built, with new facilities, storage areas and a meeting room.



Costing around £100,000, the project was helped by grants from Staffordshire County Council, Robbie Williams, Garfield Weston Foundation and £20,000 of local donations.



# Did you know...

Our late Chairman, Jean Allen, said:

***“Along with past projects, we have transformed the old village school into what is now a first class village amenity of which we can be proud and which will benefit our community for years to come.”***



Costing around £100,000, the project was helped by grants from Staffordshire County Council, Robbie Williams, Garfield Weston Foundation and £20,000 of local donations.

# Village Halls Week 2020

20 January - 26 January 2020

**Celebrating England's  
Village Halls**



*Village Halls Week is run by the national rural charity  
Action with Communities in Rural England (ACRE)*

[www.acre.org.uk](http://www.acre.org.uk)



# Did you know...

*“Where can you attend a pole dancing class, buy a decent bottle of pinot noir and enjoy a country music gig all under one roof? The answer, it would appear, is your local village hall.*

*Village halls are enjoying a resurgence as other rural services and shops are closing down. Some of England’s 10,000 village halls are now bustling hubs that offer activities that would have once raised an eyebrow.”*

The Times, 10 January 2020



# *Did you know...*

In many UK villages, especially those without a 'locals' pub, a village hall is the only public space to meet, hold activities and generally come together as a community.





# *Did you know...*

Around **1,000** village halls host a community enterprise such as Post Office, community shop, coffee shop, library, cinema or farmers' market.



# Did you know...

Alstonefield Village Hall hosts an outreach Post Office (one of around 1,400 in the UK)

A red rectangular sign with a white circular logo at the top containing the words "POST OFFICE". Below the logo is a white box containing a table of opening hours.

POST OFFICE	
Monday	13:00 to 16:00
Tuesday	Closed
Wednesday	Closed
Thursday	12:00 to 14:00
Friday	Closed



*“Around **1,000** village halls host a community enterprise such as a Post Office, community shop, coffee shop, library, cinema or farmers' market”*



# Did you know...

Alstonefield Village Hall has a library where people can read or purchase books



*“Around **1,000** village halls host a community enterprise such as a Post Office, community shop, coffee shop, library, cinema or farmers' market”*

# *Did you know...*

Each village hall hosts an average of **9** life events, such as weddings, christening parties or wakes each year. That's **90,000** gatherings.





# Did you know...

Alstonefield Village Hall hosts an average of about **13** 'life events' every year – more than the national average



*"Each village hall hosts an average of **9** life events, such as weddings, christening parties or wakes each year. That's **90,000** gatherings"*



# Village Halls Week 2020

20 January - 26 January 2020

**Celebrating England's  
Village Halls**



*Village Halls Week is run by the national rural charity  
Action with Communities in Rural England (ACRE)*

[www.acre.org.uk](http://www.acre.org.uk)

# Did you know...

Alstonefield Village Hall has more than 8 **user groups**, which means the hall is used almost every day of the week



*"Each village hall hosts an average of 9 life events, such as weddings, christening parties or wakes each year. That's 90,000 gatherings"*

# Did you know...

## Friendship Club (formerly the WVRS)

- ❖ Talks, trips, lunches
- ❖ Meets alternate Wednesdays, March-Dec
- ❖ All welcome (any age!)
- ❖ Contact Mandy 07779 899 860  
or Anne on 01298 84394



*Alstonefield Village Hall has more than 8 user groups,  
which means the hall is used almost every day of the week*





## ***Friendship Club***

*Talks, trips, lunches. Meets alternate Wednesdays, March - Dec. Contact Mandy 07779 899 860 or Anne 01298 84394*





## ***Friendship Club***

*Talks, trips, lunches. Meets alternate Wednesdays, March - Dec. Contact Mandy 07779 899 860 or Anne 01298 84394*

# Did you know...

## Pilates classes

- ❖ Professional teacher
- ❖ Meets Mondays, Fridays 9.30am – 10.30am and Tuesday evenings 6pm - 7pm
- ❖ All welcome (any age!)
- ❖ Contact Victoria Turner by email:  
**[pilatesinthepeaks@gmail.com](mailto:pilatesinthepeaks@gmail.com)**



*Alstonefield Village Hall has more than 8 user groups, which means the hall is used almost every day of the week*





## **Pilates**

Meets Mondays and Fridays 9.30am – 10.30am, and  
Tuesday evenings 6pm - 7pm. All welcome (any age!)

# Did you know...

## Local History Group

- ❖ Research, talks, trips
- ❖ Meets most months on Wednesday evenings
- ❖ Become a member (free)  
- or just come along
- ❖ Contact Susan on 310025

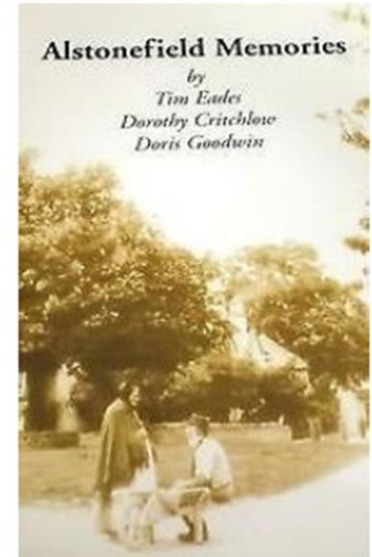


*Alstonefield Village Hall has more than 8 user groups,  
which means the hall is used almost every day of the week*

# Alstonefield Local History Group

The Alstonefield Local History Group (ALHG) was re-established in 2016, continuing the good work of an earlier group, the Local History Society, which published the book *Alstonefield Memories*. The aims of the ALHG are, in short, to capture and collate the history of our village for the future. From time to time, exhibitions, talks or other presentations take place, to engage and inform those with an interest in the history of the area.

There is some general information on the history of the village on the village website ([www.alstonefield.org](http://www.alstonefield.org)). You can also find information on village family history including links to detailed information on church headstones, memorials and the wartime remembrance books.



## Local History Group

Research, talks, trips; Wednesday evenings most months. Free membership or just come along - Contact Susan on 310025



# Alstonefield Local History Group



## Local History Group

Research, talks, trips; meets Wednesday evenings monthly.  
Free membership or just come along - Contact Susan on 310025

# Alstonefield Local History Group



A key priority for the Group is the digitisation of documents, photographs, videos and oral memories, to limit, as far as possible, the loss of historic information that exists in the area. We also want to provide a secure local repository for documents or other items that people are willing to donate or loan, whilst keeping in mind the extensive archiving services also provided by Staffordshire Records Office (which we particularly do to wish to duplicate or detract from).

Any documents or small items retained locally are kept in a specially-purchased fireproof cabinet.

A database of all items is maintained, such that information can be readily-accessed using a variety of search methods.

So we are pleased to receive – or discuss options for – any items for potential loan or deposit; or documents that could be copied/scanned and preserved in a digital format.

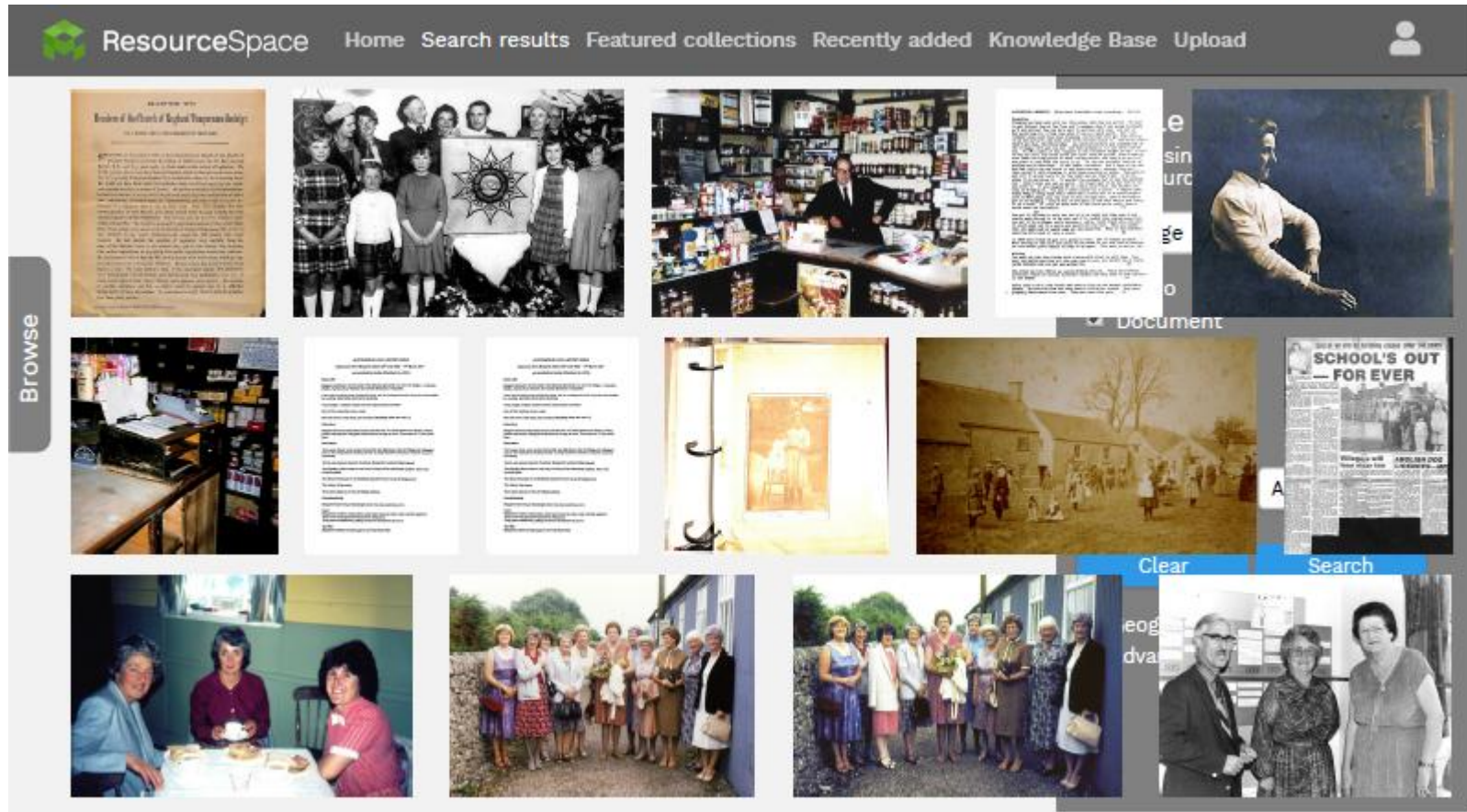


## Local History Group

Research, talks, trips; Wednesday evenings most months. Free membership or just come along - Contact Susan on 310025



# Alstonefield Local History Group



## Local History Group

Research, talks, trips; meets Wednesday evenings monthly.  
Free membership or just come along - Contact Susan on 310025

# Alstonefield Local History Group



## **Local History Group**

Research, talks, trips; meets Wednesday evenings monthly.  
Free membership or just come along - Contact Susan on 310025



# Alstonefield Local History Group



## ***Local History Group***

*Research, talks, trips; meets Wednesday evenings monthly.  
Free membership or just come along - Contact Susan on 310025*

# Did you know...

## Parent & Toddler Group

- ❖ Play, crafts, baking, etc
- ❖ From birth to school age
- ❖ Meets every Wednesday morning 9.30am - 11.30am
- ❖ No need to book
- ❖ Contact Jo on 310538



*Alstonefield Village Hall has more than 8 user groups, which means the hall is used almost every day of the week*





## **Parent & Toddler Group**

*Play, crafts, baking, etc; meets every Wednesday morning. No need to book - contact Jo on 310538*



## **Parent & Toddler Group**

*Play, crafts, baking, etc; meets every Wednesday morning. No need to book - contact Jo on 310538*





## **Parent & Toddler Group**

Play, crafts, baking, etc; meets every Wednesday morning. No need to book - contact Jo on 310538



## **Parent & Toddler Group**

Play, crafts, baking, etc; meets every Wednesday morning. No need to book - contact Jo on 310538





## **Parent & Toddler Group**

Play, crafts, baking, etc; meets every Wednesday morning. No need to book - contact Jo on 310538

# Did you know...

## Threads *"like going on a Spa day without taking your clothes off"*

- ❖ Hand embroidery workshops
- ❖ Held regularly on Saturdays & Thursdays (excl Dec-Jan)
- ❖ Affordable and friendly
- ❖ Home-made cakes, refreshments
- ❖ Dates and availability on website or Contact Cathy on 310125



[www.threadsworkshops.co.uk](http://www.threadsworkshops.co.uk)



*Alstonefield Village Hall has more than 8 user groups, which means the hall is used almost every day of the week*





Workshops to suit all  
abilities including  
complete beginners

## ***'Threads' hand-embroidery workshops***

*Held regularly on Saturdays & Thursdays (except Dec-Jan).  
Dates and availability on website or call 01335 310125*





Materials packs  
included for each  
workshop

## ***'Threads' hand-embroidery workshops***

*Held regularly on Saturdays & Thursdays (except Dec-Jan).  
Dates and availability on website or call 01335 310125*





Homemade cakes & biscuits included on  
all workshops

## ***'Threads' hand-embroidery workshops***

*Held regularly on Saturdays & Thursdays (except Dec-Jan).  
Dates and availability on website or call 01335 310125*



Regular Temari Ball workshops at  
beginner, intermediate and advanced levels

## ***'Threads' hand-embroidery workshops***

*Held regularly on Saturdays & Thursdays (except Dec-Jan).  
Dates and availability on website or call 01335 310125*



# Did you know...

## Indoor bowls

- ❖ Now nearly 30 years old
- ❖ All welcome, join or just drop in
- ❖ Meets Monday and Friday, 2 - 4pm
- ❖ Contact Gilbert on 310259



*Alstonefield Village Hall has more than 8 user groups, which means the hall is used almost every day of the week*



## ***Indoor bowls***

*Now nearly 30 years old; all welcome, join or just drop in.  
Meets Monday & Friday 2 - 4pm Contact Gilbert on 310259*





## ***Indoor bowls***

*Now nearly 30 years old; all welcome, join or just drop in.  
Meets Monday & Friday 2 - 4pm Contact Gilbert on 310259*





## **Indoor bowls**

Now nearly 30 years old; all welcome, join or just drop in.  
Meets Monday & Friday 2 - 4pm Contact Gilbert on 310259





## ***Indoor bowls***

*Now nearly 30 years old; all welcome, join or just drop in.  
Meets Monday & Friday 2 - 4pm Contact Gilbert on 310259*

# Did you know...

## Cricket Club (aka 'The Gargoyles')

- ❖ Founded in 2006
- ❖ Games on Sunday afternoons
- ❖ Renowned cricket teas in the Hall
- ❖ New players always welcome
- ❖ Contact Jon on 310453



*Alstonefield Village Hall has more than 8 user groups, which means the hall is used almost every day of the week*





## **Cricket Club**

*Games on Sundays; renowned cricket teas in the Hall!  
New players always welcome Contact Jon on 310453*



## **Cricket Club**

*Games on Sundays; renowned cricket teas in the Hall!  
New players always welcome Contact Jon on 310453*





## **Cricket Club**

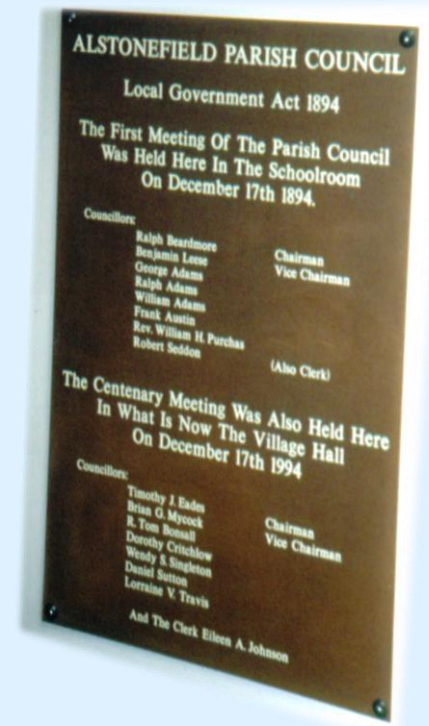
*Games on Sundays; renowned cricket teas in the Hall!  
New players always welcome Contact Jon on 310453*

# Did you know...

## Parish Council

- ❖ Council meetings held since 1894\*
- ❖ Public are welcome to attend
- ❖ Generally meets every other month
- ❖ More information on the village website:  
[www.alstonefield.org/community/parish-council](http://www.alstonefield.org/community/parish-council)

\* in the former schoolroom



*Alstonefield Village Hall has more than 8 user groups, which means the hall is used almost every day of the week*



# Village Halls Week 2020

20 January - 26 January 2020

**Celebrating England's  
Village Halls**



*Village Halls Week is run by the national rural charity  
Action with Communities in Rural England (ACRE)*

[www.acre.org.uk](http://www.acre.org.uk)

# Did you know...

## Our hire charges...

- ❖ Are among the most competitive around
- ❖ Starting at just **£8 per hour\*** for the main hall
- ❖ Reduced terms for charity fund-raising
- ❖ License in place for alcohol/music

\* rate for Parish residents/groups  
(£16 for non-residents)



**ALSTONEFIELD VILLAGE HALL**  
(ALSTONEFIELD MEMORIAL HALL & COMMUNITY CENTRE)  
**AVAILABLE FOR HIRE**  
for weddings, parties, meetings and other events

**HIRE CHARGES\***

<b>Parish residents/groups</b>	
<b>Main hall:</b>	
• Standard daytime rate	£ 8.00 per hour
• Friday/Saturday evening rate (after 6pm)	£12.00 per hour
<b>Meeting room only</b>	
<b>Exclusive-use rate</b> (i.e. sole use of all facilities including car park)	£ 5.00 per hour
<b>Commercial (non-residents)</b>	
<b>Main hall:</b>	
• Standard daytime rate	£16.00 per hour
• Friday/Saturday evening rate (after 6pm)	£20.00 per hour
<b>Meeting room only</b>	
<b>Exclusive-use rate</b> (i.e. sole use of all facilities including car park)	£10.00 per hour
	£25.00 per hour

\*The Committee has discretion over its charges for special circumstances, on request.  
Charges include heating and use of the kitchen (dishwasher, colour crockery, etc.)

Check availability online at [www.alstonefield.org/community/village-hall](http://www.alstonefield.org/community/village-hall)  
Or contact Jo Griffin, Booking Secretary Tel. 07812 606 790  
email: [alstonefieldvillagehall@hotmail.co.uk](mailto:alstonefieldvillagehall@hotmail.co.uk)



# Did you know...

## On-line booking option

❖ Visit the Village Hall page of the village website at **[www.alstonefield.org](http://www.alstonefield.org)**

❖ Or contact the Booking Secretary Jo Griffin by email at:

**[alstonefieldvillagehall@hotmail.co.uk](mailto:alstonefieldvillagehall@hotmail.co.uk)**

A screenshot of the 'Alstonefield Village Hall Room Booking' web interface. It features a 'Booking\*' dropdown menu currently set to 'Main Room'. Below this is a calendar for January and February 2020. The calendar shows days of the week (MO to SU) and dates. The date '9' in February is highlighted in blue, indicating a selected booking date. The interface is clean and user-friendly, with a white background and blue accents.

## Hire charges

Among the most competitive around, starting at just £8 per hour for the main hall. Licensed for alcohol, music, etc.

# Village Halls Week 2020

20 January - 26 January 2020

**Celebrating England's  
Village Halls**



*Village Halls Week is run by the national rural charity  
Action with Communities in Rural England (ACRE)*

[www.acre.org.uk](http://www.acre.org.uk)



# *Did you know...*

## **We arrange activities ourselves**

As well as user groups (hirers), the committee itself uses the Hall's facilities:

- ❖ to raise additional income to cover costs
- ❖ to promote community well-being and social and cultural engagement



*Alstonefield Village Hall has more than 8 user groups, which means the hall is used almost every day of the week*

# *Did you know...*

Alstonefield Village Hall has gained a reputation for staging top-quality **live music events**, every month of the year





# Did you know...

We can pause this slideshow for video samples, on request:

Natalie Duncan

Gordon Giltrap

Amy Wadge

Jon Allen

Christine Collister

Ruth Notman

Guy Davis

Brooks Williams

Holy Moly & Crackers

Stephen Fearing



# *Did you know...*

All profits from our **live music events** go towards the costs of running the Hall, which are almost **£10,000** per year.

(That's around **£25** per day, just to cover heating, etc.)



*Alstonefield Village Hall has gained a reputation for staging top-quality live music events, every month of the year*



# Did you know...

All profits from our **live music events** go towards the costs of running the Hall, which are almost **£10,000** per year.

Profits from concerts is:

**24%**  
approx  
of our  
total income



*Alstonefield Village Hall has gained a reputation for staging top-quality live music events, every month of the year*

# Did you know...

With the help of people in the village,  
we provide breakfasts and refreshments  
on Car Boot Sundays.

Profits from Car Boots is:

**21%**  
approx  
of our  
total income





# *Did you know...*

For the last few years, we've had a **New Year** Indoor Market. All proceeds go the Hall, but it's also a very sociable event in the quiet time after Christmas.



# Did you know...

We ask only for a nominal 'expenses-only' donation for **charitable events**, e.g.

- ❖ Leadenboot Walking Challenge
- ❖ Carol Suppers
- ❖ World's Biggest Coffee Morning

Local causes



**MACMILLAN**  
CANCER SUPPORT





# Village Halls Week 2020

20 January - 26 January 2020

**Celebrating England's  
Village Halls**



*Village Halls Week is run by the national rural charity  
Action with Communities in Rural England (ACRE)*

[www.acre.org.uk](http://www.acre.org.uk)